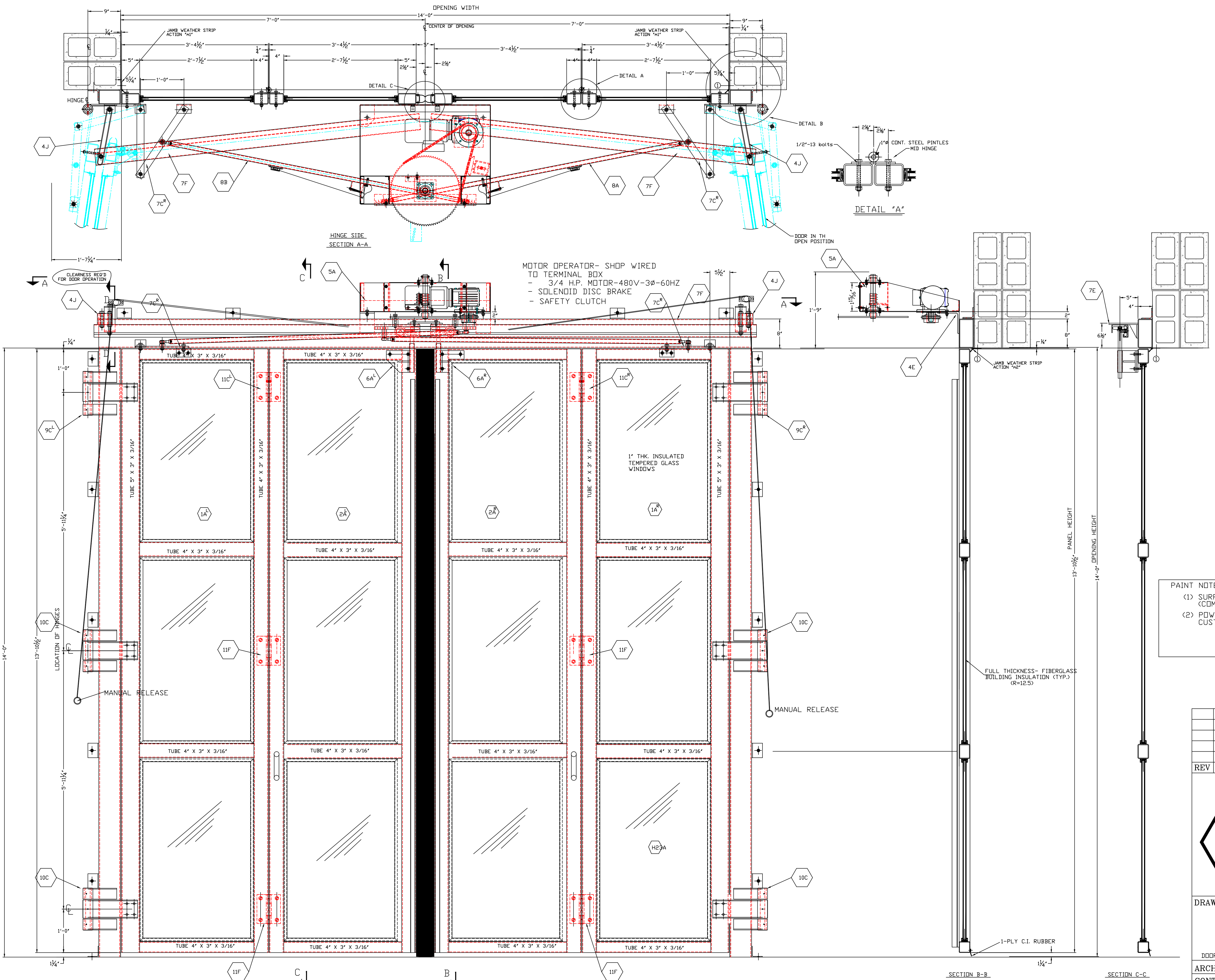


BILL OF MATERIAL					
ITEM	QTY.	UNIT	MARK	DESCRIPTION	REMARKS
3/3	1/1	1A	L/R	PANELS W/ HINGES-	
3/3	1/1	2A	L/R	PANELS W/HINGES -	
6	2	4J		TRACK SUPPORT ASSEMBLY	
6	2	4E		OPERATOR SUPPORTS	
3	1	5A		OPERATOR ASSEMBLY	
3/3	1/1	6A	R/L	ROLLER ASSEMBLY	
3/3	1/1	7C	R/L	CONTROL ARM ASSEMBLY	
3	1	7E		TRACK SUPPORT ASSEMBLY	
6	2	7F		TRACK	
3	1	8A		DRIVE ARM ASSEMBLY	
3	1	8B		DRIVE ARM ASSEMBLY	
3/3	1/1	9C	L/R	JAMB-HINGE ASS'Y W/TRUST BEARING	
12	2	10C		JAMB-HINGE ASS'Y	
3/3	1/1	11C	L/R	MID-HINGE ASS'Y	
12	2	11F		MID-HINGE ASS'Y	
36	12	H-23A		INSULATED WINDOW ASSEMBLY (29 X 48') 1' THERMOPANE	
6	2	M1		1" BRUSHACTION#B0768-00-W & 2"-45" RETAINER#A0282-MI-W X 14'-0"	
3	1	M2		1" BRUSHACTION#B0768-00-W & 2"-45" RETAINER#A0282-MI-W X 14'-0"	
150	50	(1)		1/4"-14 X 5/8"LG. (S.T.S.) (S.D.S.) PLATED	



PAINT NOTE:
 (1) SURFACE PREPARATION: SSAP-SP6 (COMMERCIAL SAND BLAST)
 (2) POWDER COAT COLOR AS SELECTED BY CUSTOMER USING "RAL" STANDARD

This drawing, including principle of design, is the property of International Door, Inc. It must not be reproduced in any manner nor submitted to outside parties for examination without our consent. It shall be used only as a means of reference to work designed or furnished by us, unless expressly authorized and consented to in writing by International Door, Incorporated, Canton, Michigan.

TO FIELD	
TO SHOP	
RE SUBMITTED FOR APPROVAL (E-MAIL)	
DESCRIPTION	
INTERNATIONAL DOOR, INC.	
(734) 459-3000	
8001 Ronda Dr.	Canton, Michigan 48187
PROJECT:	
MEAS FIRE STATION NO.219 3361 S. SIGNAL BUTTE ROAD CITY OF MMEAS, AR	
DRAWING TITLE: GENERAL ARRANGEMENT FOR FOUR FOLD DOORS INSULATED DOORS DOUBLE-SKIN ELECTRIC OPERATED SINGLE OVERHEAD MOUNTED OPERATOR	
DOOR# 137A, 137B, 137C	OPENING SIZE 14'-0" x 14'-0"
ARCH. PERLMAN ARCHITECTS	
CONTR.	
DRAWN: RB	DATE 9/23/10
CHECKED: DS	JOB NO. MESA STN #219
APPROVED: DS	CUSTOMER NO.
	SHEET A1 OF

INTERIOR ELEVATION
 (3) REQ'D - FOUR FOLD DOOR (AS SHOWN)