

Fire Doors

IDI is pleased to offer a **UL approved, A-Label fire rated vertical lift door assembly**. Available with or without a motor operator, the IDI fire rated door offers protection and durability with one single door assembly.

The IDI fire rated assembly is designed to be installed in areas which require fire doors, but must also be operated (manually or electrically) on a regular basis. In the past, the only way to accomplish this was to purchase and install two (2) different door units and install them on opposite sides of the opening. This was time-consuming and extremely expensive. With this in mind, IDI tested a fire door at **Underwriters Laboratories** outside Chicago, IL. The tests resulted in the world's first UL approved A-Label vertical lift fire door.

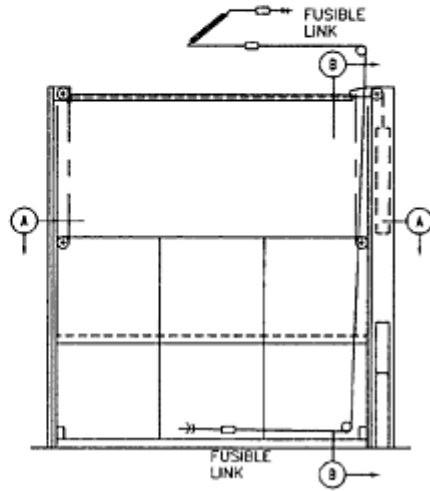
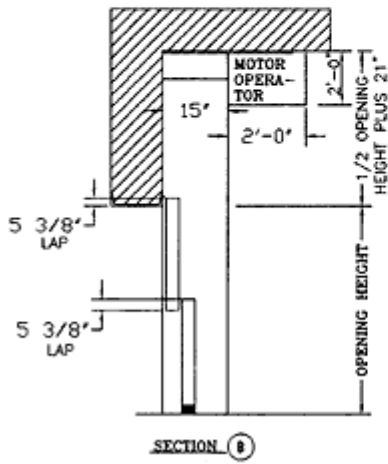
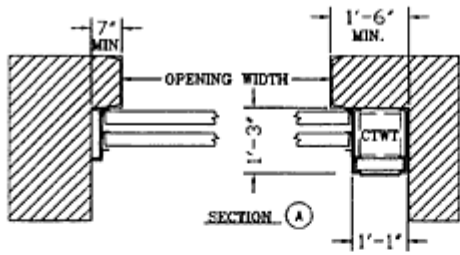
The IDI fire door is capable of being labeled for openings up to but not exceeding 15' x 12'6". All openings larger than these parameters can be furnished with a manufacturers certificate. All units are provided with dual mounted fusible link assemblies. IDI vertical lift fire doors will automatically close upon activation of the fusible link system.

Applications

- Automotive plants
- Warehouses
- Interior fire walls
- Common walls between manufacturing and office areas
- Common walls between manufacturing areas

Options

- Motor operators and controls
- Oversize certificate (manufacturer's certificate)
- Smoke detectors and activating sensors



INSIDE ELEVATION-2 LEAF VERTICAL LIFT FIRE DOOR

